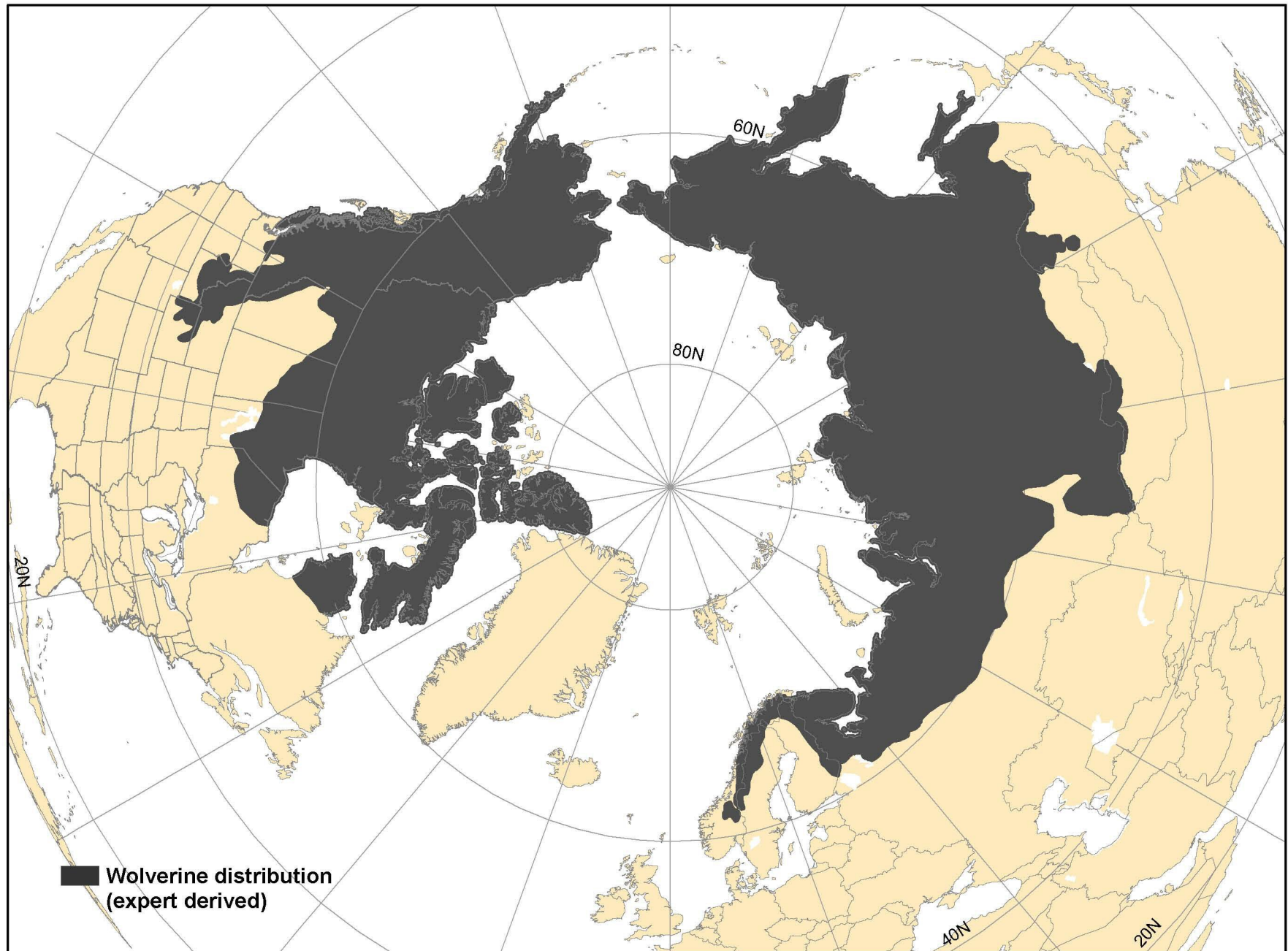


Worldwide Distribution of the Wolverine



Data used in the development of this map were gleaned from the published sources listed below.

Boundaries were reviewed and refined by participants at the 1st International Wolverine Symposium, Jokkmokk Sweden, 2005. The Wolverine Foundation, Inc. offers this map as a representation based on the best information available but makes no claims as to its accuracy.

Additional Sources:

Novikov, G. A. 1962. Carnivorous mammals of the fauna of the USSR. Academy of Sciences of the USSR, Israel Program for Scientific Translations, Jerusalem. 283 pp.

Landa, A., M. Linden, and L. Kojola. 2000. Action plan for the conservation of wolverines (*Gulo gulo*) in Europe. Convention on the conservation of European wildlife and natural habitats, Oslo. 43 pp.

Renzhu, P. 2000. The Chinese Wolverine. Science Books [Published in Chinese with English Summary]. 191pp.

Aubry, K. B., K. S. McKelvey, and J. P. Copeland. 2007. Distribution and broadscale habitat relations of the wolverine in the contiguous United States.

